

# mPx Linear™

Supporting your productivity-enhancement initiatives

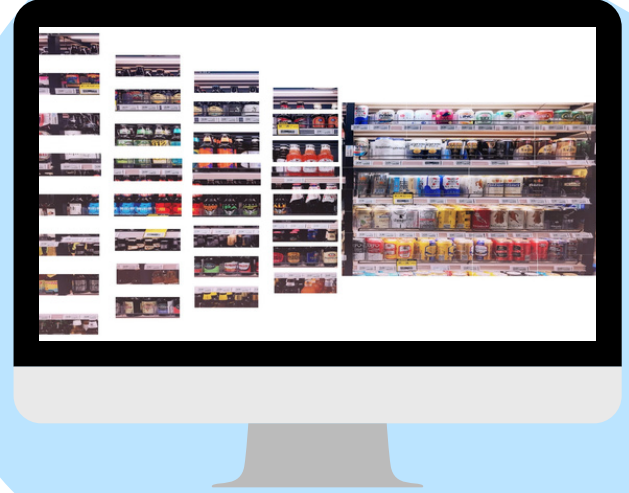
## Looking to better identify missing products on your shelves?

mPx Linear™ is the answer for increasing the efficiency of any shelving management system.

mPx Linear™'s stitching capabilities are backed by breakthrough mathematical formulas, turning images or video into **exploitable data**.

Linear stitching is a way to stitch together images being produced in a linear manner where the user needs to scan in objects more significant than the field of view of a camera.

Either the camera or the object can be moved in a single direction to effectively scan the object by combining successive images into a single larger image to be later processed by other modules.

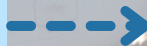


## Where & How should you use mPx Linear™ ?



### Applications

- Shelf Scanning for Stock Management using Robots or Drones
- Under Vehicle Scanning
- Land delimitations, and views from a distance through drones, satellites
- Inspection of pipelines, railways, Electrical / High tension networks, sewers...



### Sectors/Industries

- FMCG, Bookstores, Warehouses
- Security
- Imaging
- Utilities, Transportation

## mPx Linear™ Special Features

- *Fast*
- *Optimized*
- *High Resolution*
- *GPU-based processing*
- *Parallax compensation*
- *Compatible with embedded, low consumption systems*
- *Colour-correction*



info@metaPeakx.com

www.metapeakx.com

© 2022 Metapeakx. All rights reserved